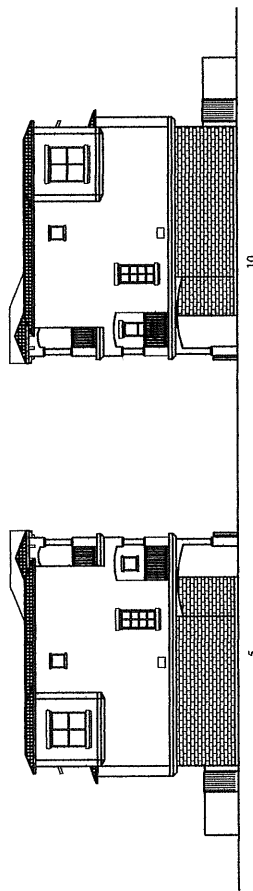
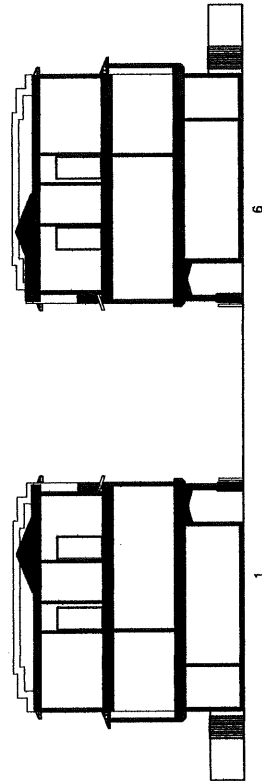


1 BUILDINGS 10-5 EAST
3-10 1/8"=1'-0"



2 BUILDINGS 5-10 WEST
3-10 1/8"=1'-0"



3 BUILDING SECTIONS
BUILDINGS 1-6
3-10 1/8"=1'-0"

FINISH SCHEDULE
ROOFING: RED TILE
SOFFIT: PERFORATED AND PREFINISHED ALUMINUM
COLOUR TO MATCH ROOFING
FASCIA: 6" PREFINISHED ALUMINUM
COLOUR TO MATCH ROOFING

CEMENT STUCCO:
S1 BEIGE
S2 MEDIUM BROWN
S3 LIGHT RED

MOULDINGS, TRELLIS DETAILS:
LIGHT RED
ORNAMENTAL METAL RAILINGS
TRIM-PREFINISHED ALUMINUM

BUILDING HEIGHT = 34'-4"

LEGEND
ISL INFRARED SECURITY LIGHT

WINDOW SCHEDULE
W1 -60x60 HORIZONTAL SLIDER
W2 -30x30 HORIZONTAL SLIDER
W3 -30x30 FIXED - ROUND TOP
W4 -24x54 FIXED TRANSOM
W5 -24x24 AWING
W6 -24x24 AWING
W7 -24x48 HORIZONTAL SLIDER
W8 -24x48 HORIZONTAL SLIDER
W9 -24x48 FIXED TRANSOM
W10 -30x60 FIXED
W11 -12x60 FIXED
W12 -24x48 VERTICAL SLIDER
D1 -36x80 ENTRANCE DOOR
D2 -32x80 GARDEN DOOR
D3 -64x80 DOUBLE GARDEN DOOR
(T) TEMPERED WINDOWS



DAVID HAMILTON
ARCHITECT
AZ 32302
1-800-662-7765

1522-03-16-06-BV
ELEVATIONS AND BUILDING SECTIONS

SHEET
3-10

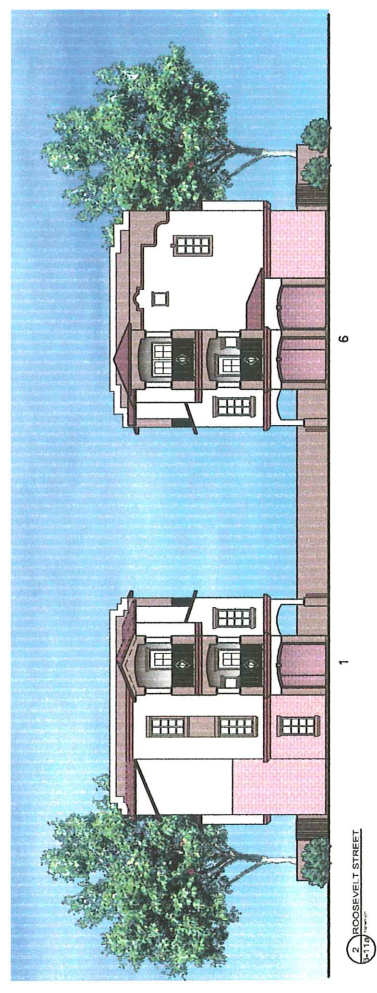
ROOSEVELT COURT

23 - 4 2008

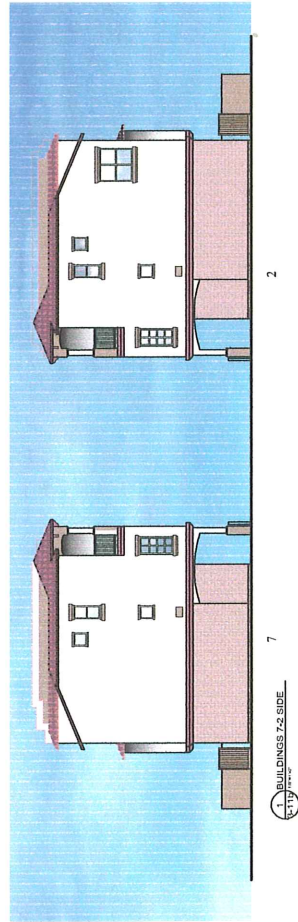
| | | | | | | |
|-----------------|----------|-------------|----------|---|--|----------------|
| ROOSEVELT COURT | DS040091 | SPD-2006.01 | REC06008 | DAVID HAMILTON ARCHITECT AZ 32302 1-800-682-7768 | 1522-01-24-08-BV COLORED ELEVATIONS | SHEET 3-11a |
| | | | | | | |



FEB - 4 2008



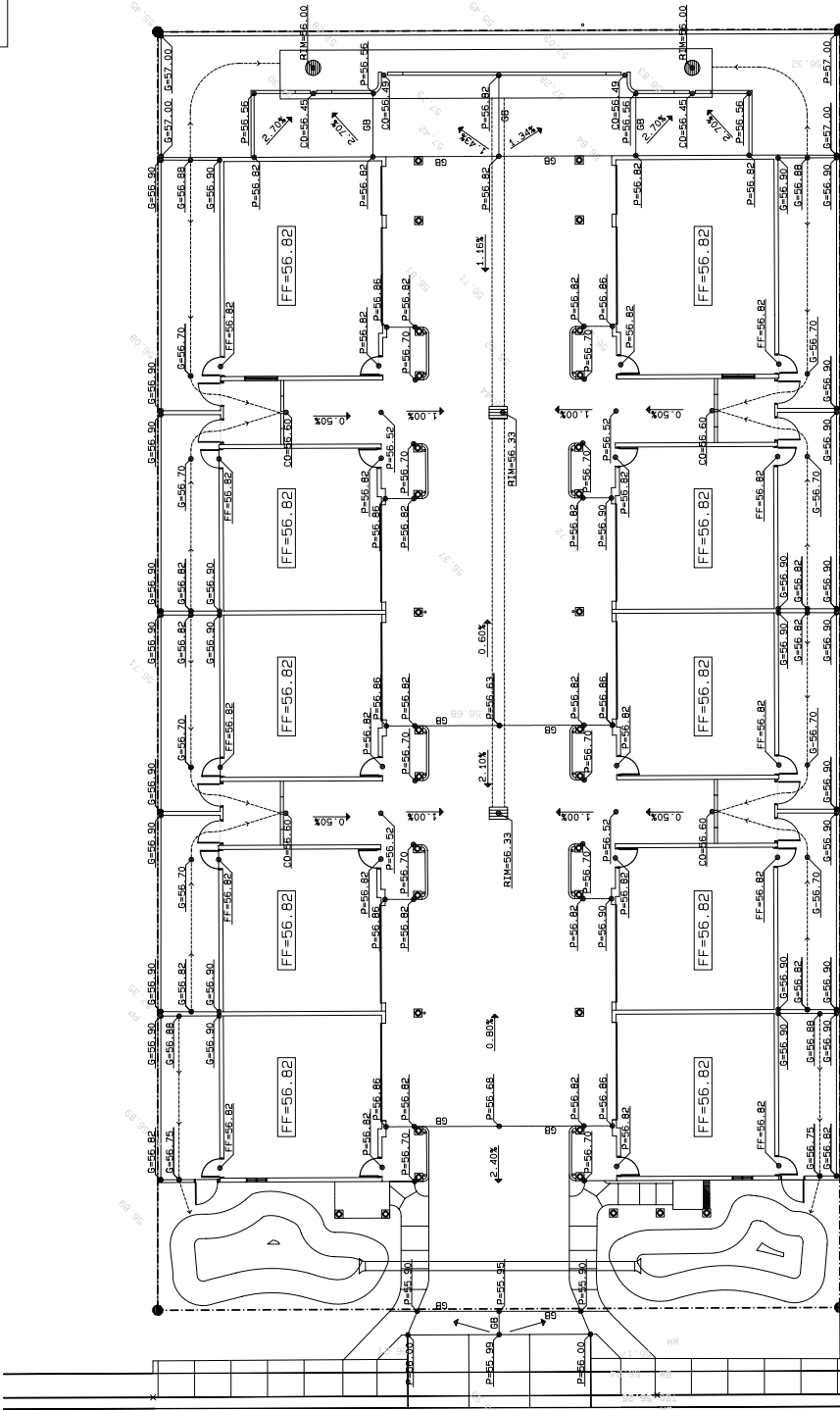
DS040091
SPD-2006.01
REC06008



| F.W.A. STATE REGION | PROJECT NO. | SHEET NO. | TOTAL SHEETS | AS BUILT |
|---------------------|-------------|-----------|--------------|----------|
| ARZ. | | | | |

NOTES:

- 1) P-XX.XX PAVEMENT ELEVATION
- 2) G-XX.XX GROUND ELEVATION
- 3) FF-XX.XX FINISHED FLOOR ELEVATION



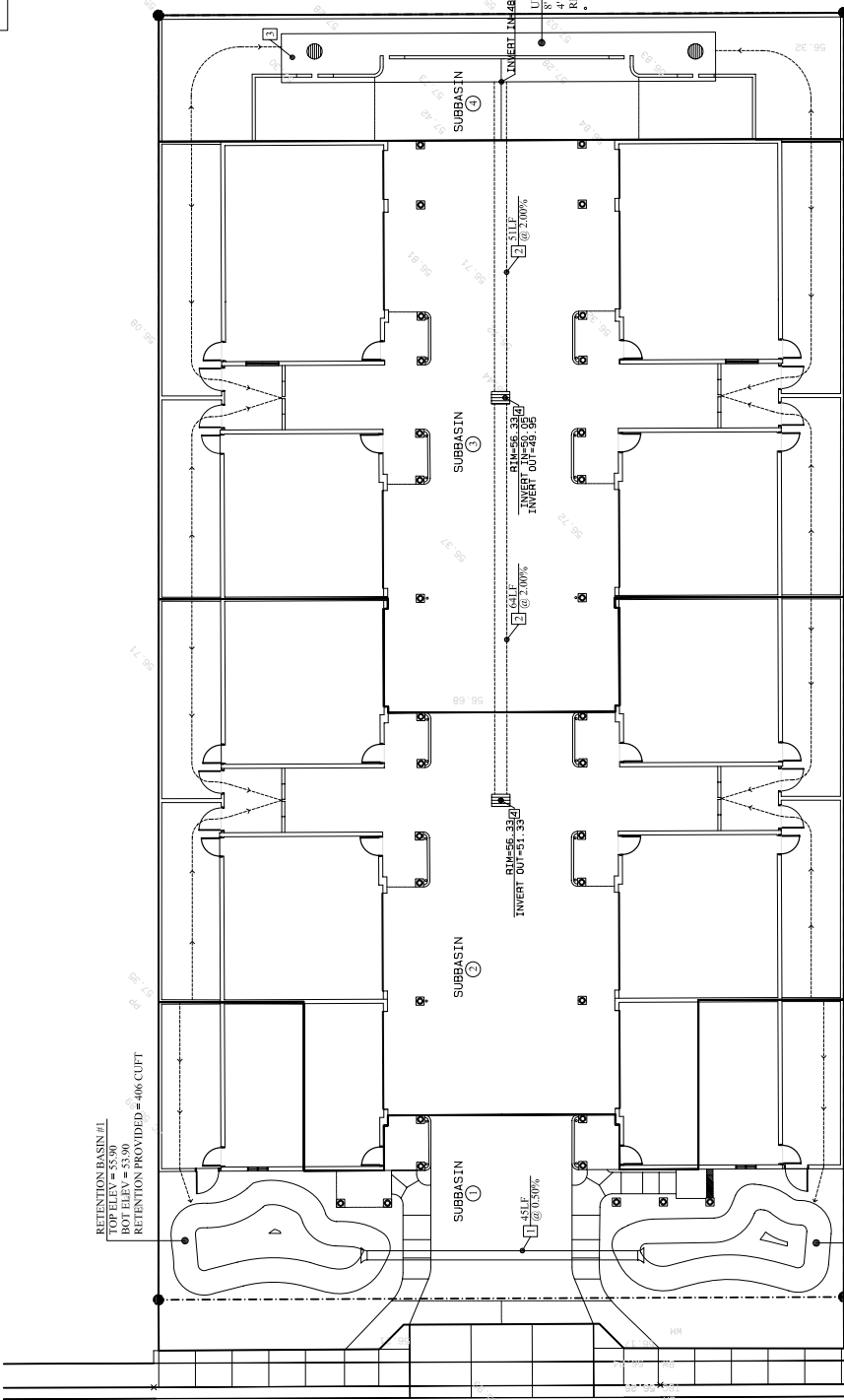
ROOSEVELT ST

| | | | |
|--------------|---|------|--------|
| DESIGN | C. BEDDOCS | DATE | FEB 08 |
| DRAWN | C. BEDDOCS | DATE | FEB 08 |
| CHECKED | D. RILEY | DATE | FEB 08 |
| PROJECT NO. | DRB06044 | | |
| PROJECT NAME | CITY OF TEMPE DEVELOPMENT SERVICES DEPARTMENT ROOSEVELT COURT PRELIMINARY GRADING AND DRAINAGE PLAN PRELIMINARY GRADING | | |
| LOCATION | TEMPE, AZ | | |
| SHEET | 2 | OF | 4 |

| F.W.A. REGION | STATE | PROJECT NO. | SHEET NO. | TOTAL SHEETS | AS BUILT |
|---------------|-------|-------------|-----------|--------------|----------|
| | ARZ. | | | | |

NOTES:

1. INSTALL 12" CMP PER M.A.G. STD. DTL. 510. (LENGTH AND SLOPE AS NOTED)
2. INSTALL 24" CMP PER M.A.G. STD. DTL. 510. (LENGTH AND SLOPE AS NOTED)
3. INSTALL MAXWELL PLUS DRYWELL PER DETAIL 1 ON SHEET 4
4. INSTALL CATCH BASIN TYPE F PER M.A.G. STD. DTL. 510. (LENGTH AND SLOPE AS NOTED)



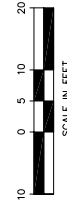
ROOSEVELT ST

| SUBBASIN # | RUNOFF COEFFICIENT | RAINFALL INTENSITY IN/SEC | AREA SQFT | RETENTION NEEDED CUFT | RETENTION PROVIDED CUFT | RETENTION PROVIDED BY | SUFFICIENT RETENTION? YES / NO |
|------------|--------------------|---------------------------|-----------|-----------------------|-------------------------|-----------------------------------|--------------------------------|
| 1 | 0.60 | 2.40 | 2587 | 729 | 729 | RETENTION #1 & #2 | YES |
| 2 | 0.60 | 2.40 | 1240 | 1267 | | | |
| 3 | 0.60 | 2.40 | 6866 | 1631 | 3247 | 8" DIA UNDERGROUND RETENTION PIPE | YES |
| 4 | 0.60 | 2.40 | 7689 | 1297 | | | |
| | 0.95 | 2.40 | 1015 | 349 | | | |

RETENTION = C * I * A

RETENTION BASIN #2
TOP ELEV = 55.90
BOT ELEV = 54.15
RETENTION PROVIDED = 323 CUFT

RETENTION BASIN #1
TOP ELEV = 55.90
BOT ELEV = 53.90
RETENTION PROVIDED = 406 CUFT



| | | | |
|-----------------------------|--|---------------------------------------|--|
| DESIGN: G. BEDDOCS | | DATE: FEB 08 | |
| DRAWN: G. BEDDOCS | | FEB 08 | |
| CHECKED: D. RILEY | | FEB 08 | |
| APPROVED: G. BEDDOCS | | FEB 08 | |
| PROJECT: UCG | | CITY OF TEMPE | |
| PROJECT NO: DRB06044 | | DEVELOPMENT SERVICES DEPARTMENT | |
| PROJECT NAME: UCG | | ROOSEVELT COURT | |
| PROJECT LOCATION: TEMPE, AZ | | PRELIMINARY GRADING AND DRAINAGE PLAN | |
| PROJECT NO: DRB06044 | | PRELIMINARY GRADING | |
| PROJECT NO: DRB06044 | | LOCATION: TEMPE, AZ | |
| PROJECT NO: DRB06044 | | SHEET 3 OF 4 | |

NOT FOR CONSTRUCTION



LOOKING WEST ACROSS SITE
TOWARD ROOSEVELT ST.)



LOOKING NORTHWEST FROM SITE
(601 W. 3RD STREET)



LOOKING NORTH ACROSS SITE
(RESIDENCE @ 309 S ROOSEVELT ST.)



LOOKING NORTH ALONG EAST
SIDE OF ROOSEVELT ST.



LOOKING NORTHEAST ACROSS SITE
(MCINTYRE, DONAHUE, JONES)



LOOKING EAST ACROSS SITE
(HAYDEN BUTTE)



LOOKING EAST ACROSS SITE
(6' HIGH WALL)



SOUTHEAST SITE CORNER
(RESIDENCE @ 331 S. ROOSEVELT)



LOOKING SOUTHEAST FROM SITE
(CENTERPOINT RESIDENTIAL TOWER)



LOOKING SOUTH FROM SITE
(331 S. ROOSEVELT - 6' HIGH WALL)